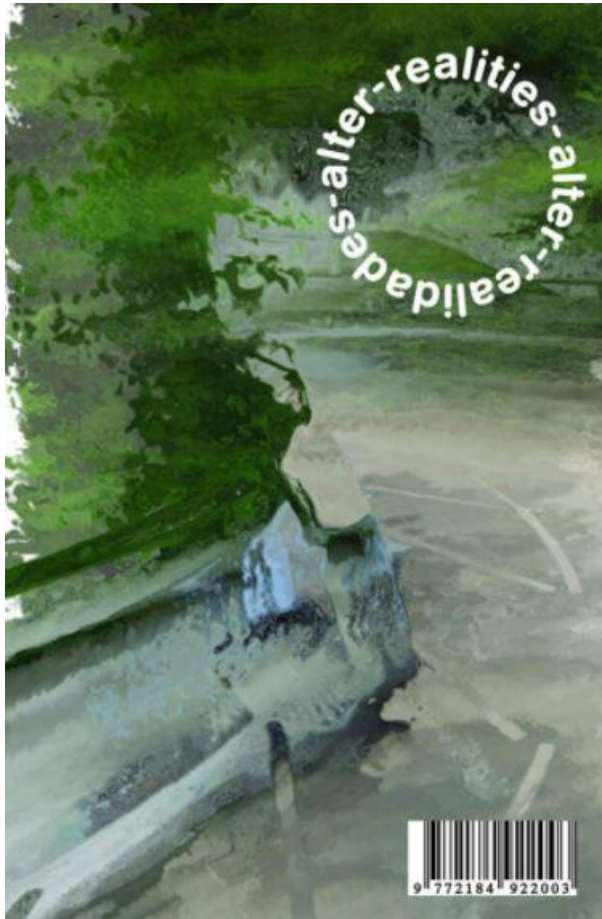


Three of recently edited books by **Alastair Fuad-Luke** that embrace our human/beyond human relations



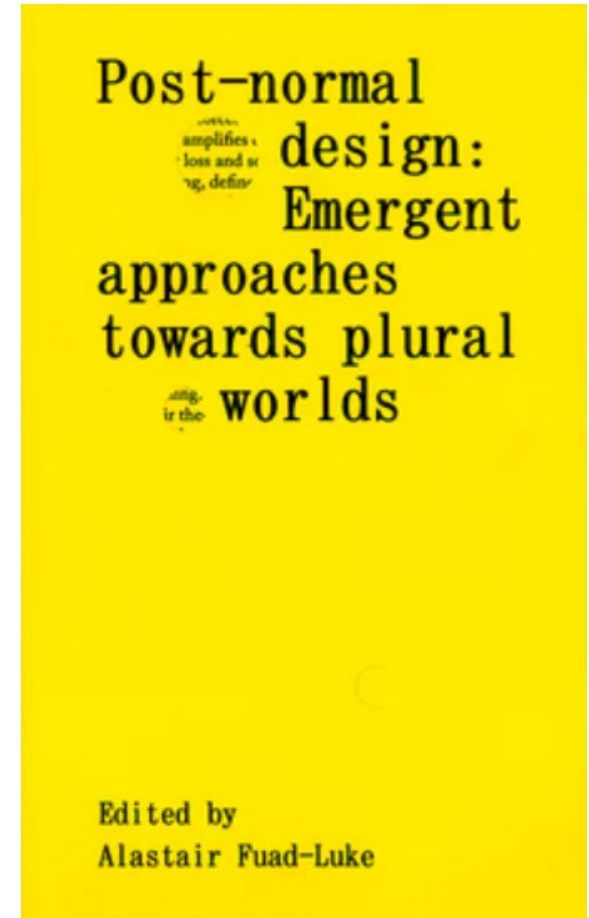
Alter-realities #1
Matosinhos (Portugal), 2021

<https://store.esadidea.pt/collections/books/products/alter-journal-1>



Field Explorations
Berlin (Allemagne), 2022

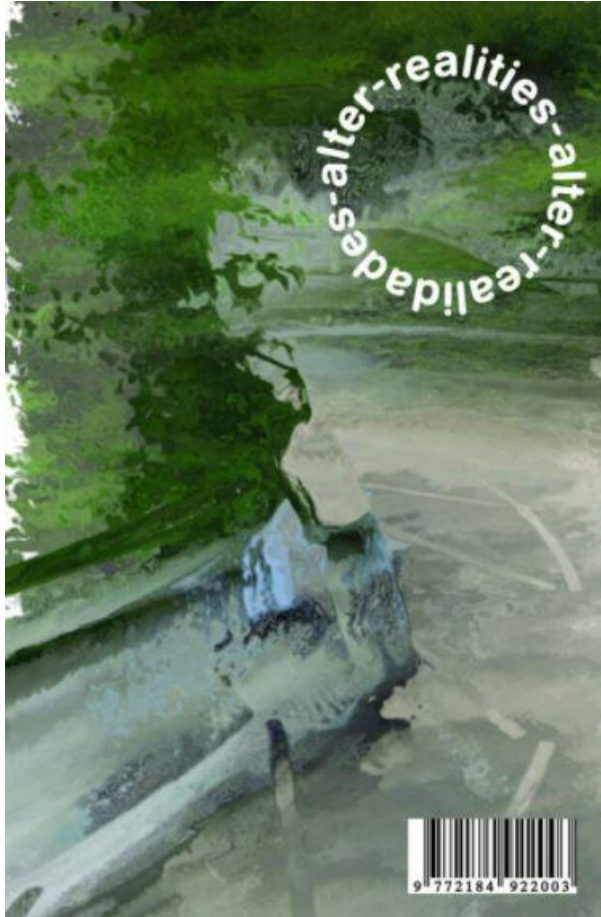
http://agentsofalternatives.com/?page_id=134



Post-normal Design
Matosinhos (Portugal), 2022

<https://store.esadidea.pt/collections/books/products/post-normal-design>

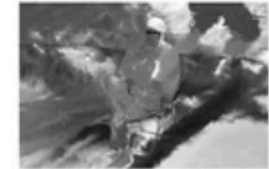
Alter-realities #1



Designing towards the Sympoiecene

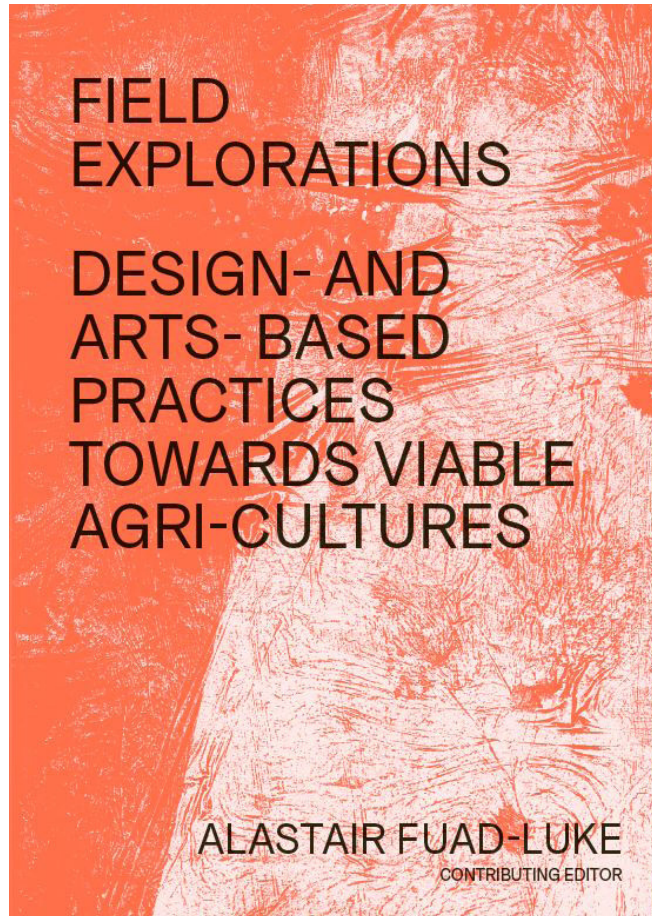
Alastair Fuad-Luke

The Long Now Foundation, co-founded by Danny Hill, Stewart Brand and others in 1996, asks humanity to think ten thousand years into the future to reflect on the direction(s) their activities should take and to develop the ability to act on long-term timeframes. This is quotidian behaviour by geologists, evolutionary biologists, physicists and astronomers but is a difficult task for citizens, politicians and businesses who tend to focus on near futures.



Yet, at the turn of the millennium when atmospheric chemist and Nobel laureate Paul Crutzen and ecologist Eugene Stoermer introduced the neologism "Anthropocene" to describe a new geological era where human impact is the prime actor', they succeeded in generating a "turn" well beyond geological discourse. The concept of the Anthropocene and its implications created heated philosophical, ontological, epistemological and ideological debates in the natural sciences, social sciences and humanities. By 2020, Franciszek Chwałczyk identified over 90 different "cenes" (a term for a distinct geological epoch) vying for attention with or contesting the Anthropocene.²

Field Explorations : Design and Art-based practices towards viable agri-culture



THIS IS NOT A TROJAN HORSE

YEAR	WHO	WHERE	WHAT
2010	FUTUREFARMERS, USA	CIVITELLA, CASANOVA AND ENVIRONS, ABRUZZO, ITALY	NOMADIC INTERVENTION GATHERING PEOPLE, KNOWLEDGE, STORIES AND MORE
THEMES AND ISSUES ADDRESSED	FIELD OF ACTION	THEIR ORGANISATION	SUBJECTS INVOLVED - PARTICIPANTS
LOCAL / SUBREGIONAL FARMING CULTURES, SITUATED KNOWLEDGE	ARTS-/DESIGN-/PERFORMANCE-BASED PRACTICE	COLLECTIVE - ARTISTS, DESIGNERS AND ARCHITECTS	POLLINARIA ORGANIC FARM AND ARTISTS RESIDENCE, FARMERS, LOCAL MAYORS, CITIZENS



234

'A few decades ago wild horses roamed free in Abruzzo and agriculture was a thriving and predominant occupation. Now big box stores, parking lots and gas stations are quickly taking place of pastures and cultivated land, while modern-day agricultural standards threaten the nuances of traditional production. Nearby cities lure the young, leaving the aging farming population without a generational change of guard. The region gained a momentary spotlight on the world stage during the earthquakes of L'Aquila in 2009 and shortly thereafter the G8 summit, undergoing important changes within a very short time.'

A strange horse rose up one summer solstice in the farming and mountain lands of Abruzzo. From 24 June to 04 July it journeyed between communities and villages attracting people, asking questions, harvesting reactions and gathering stories. Amy Franceschini, Stijn Schiffeleers and Lode Vranken of Futurefarmers collaborated with Pollinaria, a member of the worldwide network of artists residences, Res Artis, in bringing to life this nomadic intervention. This horse, and its blackboard on the inner surface of the wheel, became an interface for responses and dialogues with farmers and the locals of all generations around three loci - I farm because?; Golden memory?; Future projections? Along the way tangible objects (seeds, local food) were also collected.

What emerged? Passion, freedom and tradition keeps many farming but the young move away. Communal wheat harvests of the past done by hand, as all the farmers helped each other, provided literal, golden memories, and the magic of milk becoming cheese persists. Yet, future projections revealed uncertainty mixed with a certain village mayoral fervour to experiment with emergent technologies. Perhaps the Horse's presence affected those whose path it crossed by gifting the small hope of imagining what could be, how life can continue, but differently... the performative, ephemeral nature of This is Not A Trojan Horse affected those who experienced or were touched by it. It's agency to bring people together to dialogue, to share time, stories and more, is poignant. Especially so as it revives what it means to come together. As the spectre of loneliness haunts a generation of older farmers in Europe, is it time to explore other social configurations and designations that would endow the descriptor "farmer"?

This is Not
a Trojan Horse.
Source: website,
Futurefarmers

- 1 This is Not a Trojan Horse, <http://www.futurefarmers.com/thisisnotatrojanhorse/>
- 2 For a discussion on this topic see the conversation between Amy Franceschini of Futurefarmers and Fernando Garcia Dory of the collective INLAND, pp137-146.

FOOTNOTES

235

Fuad-Luke, A. (ed.) 2022. *Field Explorations: Design- and arts-based practices towards viable agri-cultures*. Berlin: Agents of Alternatives.

Post-normal Design : Emergent practices towards plural worlds

